

WASHINGTON JENKINS CIV. ENG.

wood well

a Pt. of W. corner line of which is beg. 546.8 ft. S 89° 26' E. 1/4 N.W. cor. S E 1/4 Sec 16
 53° 35' W. 298.1 ft. - 53° 35' W. 430. ft. - 510° 35' W. 300. ft. - 562.05' W.
 470.5 ft. - to N. side 71' St.

-270 David J. Evans to Pleasant View Eccl. Ward.

PT N.W. 1/4 Sec. 30 T. 7. N - R. 1. W. Beg. 2.87 ch W.
 + 35. ch N 1° E. of S. E. cor. rd 1/4 Sec. 777° W. 4. ch.
 S 1° W 4.75 ch. S 77° E 4. ch. N 1° E. 4.75 ch. to beg.

18-370 David J. Evans to Sarah Elizabeth Evans his wife

PT N.W. 1/4 Sec. 30 T. 7. N - R. 1. W.
 Beg. 2.87 ch W. + 30.25 ch. N 1° E. of S. E. cor 1/4
 777° W. 5.10 ch - S 1° W 18.65 ch S 78° 13' W
 4.99 ch. N 1° E 17.42 ch. to beg.

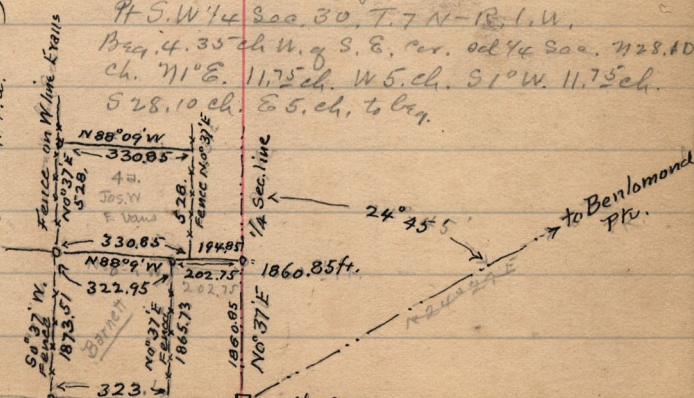
David J. Evans to Geo. Barnett.

PT S.W. 1/4 Sec. 30. T. 7. N - R. 1. W. Beg.
 1860.85 ft. N 0° 37' E. + 202.75 ft. N 88° 9' W.
 of S. E. cor rd 1/4 - 788° 09' W. 322.95 ft.
 S 0° 37' W. 1873.51 ft. S 89° 32' - 30° E. 323.1
 ft. N 0° 37' E. 1865.73 ft. to beg.

M-524 Jos. B. Alvord to David J. Evans.

PT S.W. 1/4 Sec. 30. T. 7. N - R. 1. W.
 Beg. 4.35 ch W. of S. E. cor. rd 1/4 Sec. 728.80
 ch. N 1° E. 11.75 ch. W 5. ch. S 1° W 11.75 ch.
 528.10 ch. E 5. ch. to beg.

FROM DAVID J. EVANS, to Jos. M. Evans.
 Dec. 24 1899 - PT S.W. 1/4 Sec. 30. T. 7. N
 R. 1. W. - Beg. at pt 1860.85 ft No 37' E.
 along E. line 1/4. + 194.05 ft. N 88° 9' W
 from S. E. cor. sd 1/4 Sec. - N 88° 9' W 320.85
 ft. N 0° 37' E 528. ft. S 89° E 330.85 ft.
 S 0° 37' W. 528. ft. to beg. 4. a.



S 89° 32' 30" E
 Sec. line.
 = 1/4 COR.
 on S. line Sec. 30. T. 7. N - R. 1. W.
 (see Note book G-143)